

内蒙古瑞泰恒信实业有限公司

INNER MONGOLIA RATIONAL INDUSTRY LIMITED

地址：内蒙古包头市稀土开发区金融广场A座1607室
Add: Room 1607, Block A, Financial plaza, Rare earth development district, Baotou city, Inner Mongolia, China, 014000

Web: www.imristeel.com

E-mail: sales@imristeel.com

Fax&Tel: +86 472 6219498

内蒙古瑞泰恒信实业有限公司

INNER MONGOLIA RATIONAL INDUSTRY LIMITED

INNER MONGOLIA · CHINA
www.imristeel.com



公司简介 Company introduction

内蒙古瑞泰恒信实业有限公司 (IMRI) 是一家防腐涂层和无缝钢管供应服务商, 拥有3内外涂层生产线和1条保温管生产线。主要给包钢做配套加工, 同时也是包钢钢材产品代理商, 与包钢形成战略合作关系。

包钢始建于1954年, 是中国钢铁企业中产业链最全的企业之一, 年产1700万吨钢材, 是集铁矿、稀土矿、冶炼、铸坯、轧制、管加工、检测、研发、运输于一体的大型综合企业。包钢无缝钢管年产量180万吨, 是中国品种、规格最为齐全的无缝钢管生产企业。

IMRI主营3LPE/3LPP/FBE/保温管等钢管内外涂层加工, 核心团队成员有超过十年的防腐涂层生产和防腐设备设计经验, 同时代理包钢的无缝管钢管、气瓶管、油套管、液压支柱管、合金管、钢板、线材、型材、轨道钢等产品。有给SONATRACH/BP/OGDCL/MRC/OXY/PDVISA/OMAN/ LUK OIL/SHELL/ITOCHU/BASF等大型油气公司的供货经验。

IMRI集自己团队的涂层技术优势与包钢产品全、品质优、成本低的优势于一体, 加上对不锈钢、焊管、管件资源的整合, 真正能做到防腐管道工程一站式供应。

勤奋做到比您期望的更好!

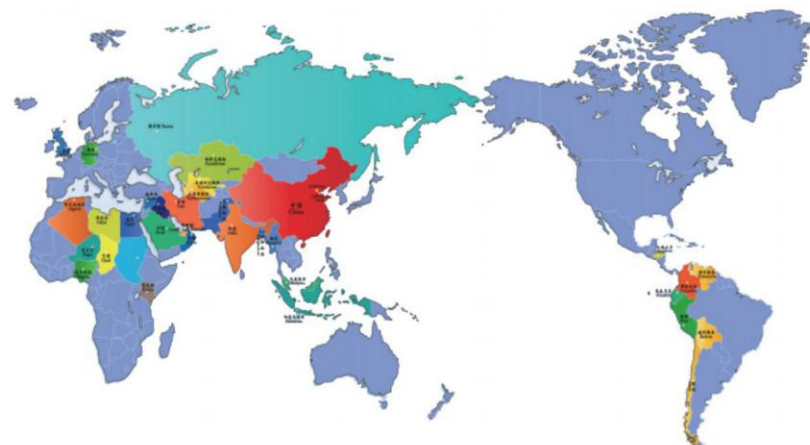
Inner Mongolia Rational Industry Limited (IMRI) is a manufacture of anti-corrosion coating and distributor of steel pipe. We have three external and internal coating production lines and one insulation production line in Baotou steel factory. We have established a long-term strategic co-operation relationship with Baotou Steel.

Founded in 1954, Baotou Steel is one of the steel companies who has the most complete industrial chain and seamless steel varieties in China. It can produce 17 million tons of steel per year, including 1.8 million tons seamless pipe. It is a large integrated enterprise with iron ore, rare-earth ore, smelting, casting, rolling, pipe processing, testing, researching and transportation. in China.

IMRI specializes in the process of internal and external pipe-coating, including 3LPE, 3LPP, FBE, and insulating tubes, etc. Core members of our team have more than 10 years' experience in the field of anti-corrosion coating production as well as anti-corrosion equipment designing. Our company is a distributor of Inner Mongolia Baotou Steel Union Co., Ltd. The main products are seamless pipes, gas cylinder tubes, oil casing, hydraulic pillar tubes, alloy tubes, steel plates, wire rod coils, shape steels, and rail steels, etc. our team have rich experience for supply products to international oil and gas companies, such as SONATRACH, BP, OGDCL, MRC, OXY, PDVISA, OMAN, LUK OIL, SHELL, ITOCHU, and BASF, etc.

IMRI integrates its own team's coating technology advantages with Baotou steel's advantages of complete products, high quality and low cost. With the integration of stainless steel, welded pipe and fittings resources, it can truly achieve one-stop supply of anti-corrosion pipeline engineering. Be diligent and do better than you expect.

产品分布图 Product Distribution Map



合作伙伴 Cooperative partner



内蒙古瑞泰恒信实业有限公司
IMRI STEEL

Web: www.imristeel.com
E-mail: sales@imristeel.com

IMRISTEEL

防腐涂层/Coating Products



内蒙古瑞泰恒信实业有限公司 (IMRI) 是一家涂层钢管生产商和供应商, 拥有自主研发设计的2条钢管外防腐涂层生产线、1条钢管内涂层生产线和1条保温管生产线。可加工多种防腐类型的管道防腐保温涂层, 包括环氧粉末 (FBE)、双层环氧粉末 (DPS)、二层聚乙烯 (2LPE)、三层聚乙烯 (3LPE)、三层聚丙烯 (3LPP)、管道内涂层、泡沫夹克复合保温管、油管内涂层、钻杆内涂层、海洋管道混凝土配重、石油沥青、煤焦油瓷漆涂敷等。

IMRI is a manufacturer and supplier of anti-corrosion coating pipes. We have independent research and development production lines, two lines for external anti-corrosion coating, one line for internal coating and one line for insulating tubes. We can undertake various kinds of anti-corrosion and insulation coatings of pipelines, including fusion bonded epoxy(FBE), two-fusion bonded epoxy(DPS), two layers polyethylene(2LPE), three layers polyethylene(3LPE), three layers polypropylene(3LPP), and pipeline internal coatings, foam jacket compound insulation pipe, internal coating of drill pipe & tubing, marine pipeline concrete counterweight, oil asphalt, coal tar enamel coating, etc.



IMRISTEEL

防腐涂层/Coating Products



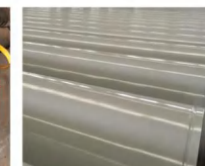
3LPP



3PE



FBE内外涂层
FBE internal & external coating



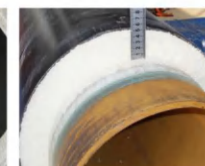
高固体耐磨涂层
High solid epoxy coating



环氧酚醛涂层
Epoxy novolac



环氧煤沥青
Epoxy coal tar coating



聚氨酯保温涂层
Foam thermal insulation



内涂层油管
Internal coating tubing

防腐涂层/Coating Products

Varieties 品种	Standard 标准	Application 应用
3LPE	DIN30670, NF A49-710, CAN/CSA Z245.21, ISO DIS21809-1, GB/T23257, etc.	Long-distance buried pipeline for oil, water, and gas, etc. normal operating temperature: 60°C, high operating temperature: 80°C 用于天然气、水、油等埋地长输管线, 常温运行温度: 60°C, 高温运行温度: 80°C
3LPP	DIN30678, NF A49-711, etc.	Long-distance buried pipeline for oil, water, and gas, etc. Operating temperature: - 20°C~110°C 用于天然气、水、油等埋地长输管线, 运行温度 - 20°C~110°C
FBE/DPS	SY/T0315, CAN/CSA Z245.20, AWWA C213, Q/CNPC 38, etc.	Long-distance anti-corrosion internal and external surface of pipelines on land and underwater. 用于陆上、水下等长输防腐管线内外壁。
Liquid epoxy internal coating 环氧树脂内涂层	API RP-5L2, ISO 15741, etc.	Long-distance and resistance-reducing transmission pipelines 用于长输减阻管道
PU foam thermal insulation coating 聚氨酯防腐保温涂层	GB/T 50538, EN253, etc.	Industry pipes in heat preservation, cold insulation engineering, etc. 用于工业管道的保温、保冷工程等
Weather resistance coating 耐候性涂层	CAN/CSA Z245.20, etc.	Widely used in aerial pipeline with more than 20 years' service life. 广泛的用于架空管线, 使用寿命超过20年。
Epoxy coal tar coating 环氧煤沥青涂层	SY-T0447, SPEC	Sewage pipe, sea and wetland pile pipe, etc 普遍用于污水输送管内壁、海洋桩管
Coating for flight oil (epoxy novolac) 输送航空煤油涂层	SPEC	Transportation of aviation kerosene, gasoline, diesel, chemical reagent etc 航空煤油、汽油、柴油、化学试剂等输送
Protective coating 外防护涂层	SPEC	Used under complex working condition 用于复杂的工况环境
High solid epoxy wear-resisting coating 高固体耐磨涂层	ISO 12944, ASTM, AWWA, EN10289, etc	Generally used for pile pipe and through pipe 一般用于桩管和穿越管等
油管、钻杆内涂层 Tubing & drill internal coating	SY/T 0544, SY/T6717, SPEC, etc.	This coating has excellent anti-corrosion and mechanical properties 用于油管、钻杆的内涂, 有优异的防腐性能和机械性能

IMRISTEEL

3LPE/PP(2LPE) Coating



3LPE/PP (2LPE) 涂层, PE是聚乙烯的缩写, PP是聚丙烯的缩写。

该涂层是以热熔性环氧粉末 (FBE) 做底层 (2LPE无底层的环氧粉末), 乙烯/丙烯基共聚物胶黏剂 (AD) 作为中间层, 高密度聚乙烯 (PE) /丙烯 (PP) 为面层的三层结构防腐覆盖层。

这种防腐层具有与钢管表面粘结力强、绝缘性能好、抗机械冲击、使用寿命长、阴极保护电流密度小等诸多优点, 广泛应用于水、石油、气体等长输管线。

3LPE防腐层的原材料可分为常温型和高温型两种, 其中常温运行温度为60℃, 高温型运行温度为80℃。而3LPP防腐层以-20℃~110℃更广泛的使用温度和优异的抗紫外线性能被广泛应用于比较极端复杂的环境里。

In 3LPE/PP(2LPE) Coating, PE means polyethylene, PP means polypropylene.

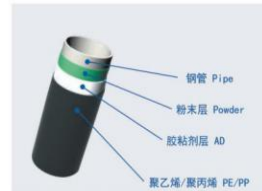
The primer is epoxy powder (FBE), the mid-layer is adhesive (AD) and the top layer is high density polyethylene (PE)/ polypropylene (PP). These combined integrated coatings have characteristics of strong bonding strength, good insulation performance, mechanical shock resistance, long service life, small cathodic protection current density, and many other advantages. This coating is widely applied in long-distance pipelines to convey water, oil and gas.

Raw materials of 3LPE can be divided into both the normal operating temperature which is 60℃, and the high operating temperature type which is 80℃. 3PP coating operating temperature is -20℃~110℃, and it is widely used in severe and complex conditions because of its excellent UV resistance and a wide range of operating temperature.

DIN30670-2012对3LPE涂层的要求

DIN30670-2012 standard for the test requirement of 3LPE

序号NO.	实验项目Testing Item	指标Performance Index		试验方法Test Method
1	电火花漏点检测Holiday Inspection	25kv	无漏点No Holiday	DIN30670-2012
2	冲击强度Impact Strength	23 °C +/- 1% 2°C	≥7J/mm	
3	剥离强度Peeling Intensity	23 °C	≥150N/cm	
			≥30N/cm	
4	压痕硬度Indentation Hardness	23 °C	≤0.2mm	
		70 °C	≤0.4mm	
5	阴极剥离试验CD Test	23 °C	≤7mm	
6	断裂伸长率Elongation at Break	60 °C 2d	≥400%	



IMRISTEEL

FBE/DPS Coating



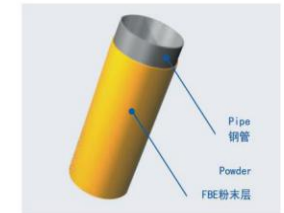
FBE/DPS Coating

FBE涂层的原材料是由固态环氧树脂、固化剂及多种助剂经混炼、粉碎加工而成的, 属热固性材料。热敷时, 先将钢管加热至220-230℃, 采用静电吸附方式, 将环氧粉末喷涂在钢管表面, 受热熔融粘结并经冷却固化成型。单层FBE防腐层厚度在300-500um, DPS (双层FBE) 厚度一般控制在450-1000um。

FBE防腐层具有优越的粘结力、高绝缘性、抗土壤应力、抗老化、抗阴极剥离耐温、耐细菌及阴极保护电流小 (只需1-5uA/m²) 等诸多优点。但也存在着抗机械冲击性能差、吸水率偏高等缺点。

FBE coating material is thermosetting material, and it is consist of solid epoxy resin, curing agent and various additives by mixing, grinding. When performing, steel tube is heated to 220-230℃, then FBE powder is sprayed on the surface of the pipe by electrostatic adsorption method, and finally the powder will be fused and bonded by heating, and solidified by cooling. Single-layer FBE coating thickness is about 300-500um, DPS (Double layer FBE) thickness is generally controlled in 450-1000um.

FBE coating has the properties of excellent adhesive strength, high insulation resistance, resistance to soil stress, anti-aging, anti-cathode stripping, anti-high temperature, resistance to bacteria and small cathodic protection current(only 1-5uA/m²), etc. But there are also poor performances against mechanical impact, high water absorption and other shortages.



环氧粉末防腐层试验要求

The test requirement of epoxy powder coating

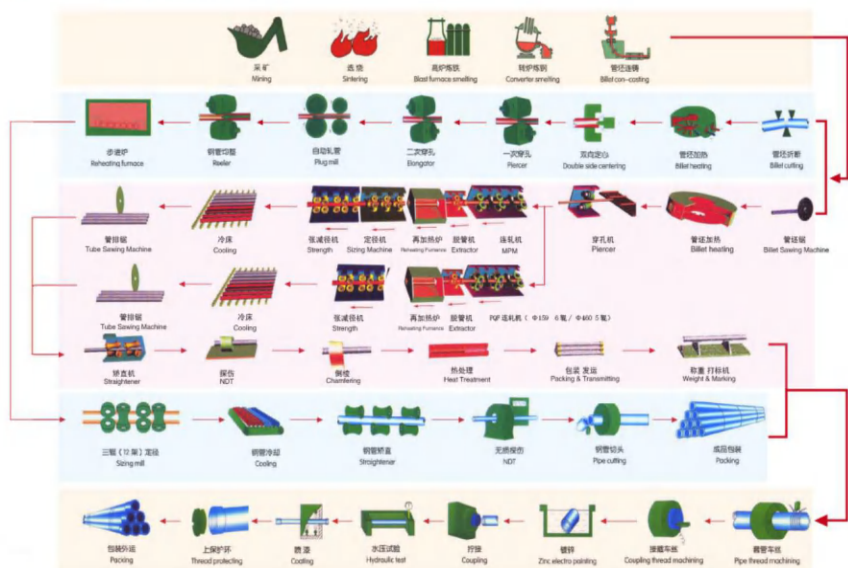
验收标准Acceptance criteria				
试验Test	试验类型Test type	体系1A System 1A	体系1B System 1B	标准Standard
固化温度差Cure—ΔTg	B	≤5℃	≤5℃	CSA Z245.20
24h耐阴极剥离(65°) 24h cathodic disbondment at 65°	A	最大半径11.5毫米 11.5 mm(maximum radius)	最大半径11.5毫米 11.5 mm(maximum radius)	
接口污染度 Interface contamination	B	最大30% 30% maximum	最大30% 30% maximum	
横截面孔隙度 Cross-section porosity	B	等级1-4 Rating of 1-4	等级1-4 Rating of 1-4	
接口孔隙度 Interface porosity	B	等级1-4 Rating of 1-4	等级1-4 Rating of 1-4	
抗1.5°弯曲 1.5°flexibility	A	—	无裂纹 No cracking	
抗2.5°弯曲 2.5°flexibility	A	无裂纹 No cracking	—	
抗1.5J冲击 1.5 J impact resistance	A	无露点 No holidays	无露点 No holidays	
24h附着力 (75°) 24 h adhesion at 75°	A	等级1-3 Rating of 1-3	—	
24h附着力 (95°) 24 h adhesion at 95°	A	—	等级1-3 Rating of 1-3	

包钢拥有5条无缝钢管生产线,4条热处理生产线,其中2条全球最先进的PQF三辊连轧自动生产线,1条MPM两辊连轧自动生产线,5条热处理生产线,可生产外径为 $\Phi 38\text{mm}$ -457mm,壁厚为2.9mm-60mm范围内的石油套管,管线管,低中高压锅炉管,液压支柱管,高压气瓶管,结构用无缝钢管,输送流体用管,管件用管,车桥管,方矩管等等,年产量180万吨。



Baotou Steel has 5 seamless steel tube production lines and 4 heat treatment lines. Two of the world's most advanced PQF three-roll automatic rolling production line, one MPM two-roll automatic rolling production line, It can produce outer diameter from Φ 38 mm to 457 mm, wall thickness from 2.9 mm to 60 mm within oil pipe, line pipe, low/high pressure boiler tube, hydraulic pillar tube, high pressure cylinder pipe, Structure pipe, fluid conveying pipe, fitting, axle tube, rectangular tube, and so on, annual output is 1.8 million tons.

热轧工艺流程图



管线管 Pipe line



锅炉管Boiler tube



结构管 Structure tube



气瓶管 Gas cylinder tube

产品目录

Product catalog

品种Variety	材质Grade(钢级Code)	标准Standard
管线用无缝钢管 Seamless pipe line	A B C X42~X70 L210~L485	API 5L A106 A5 G8/T9711
高压锅炉用无缝钢管 High press boiler	20G 12Cr1MoVG 15CrMoG 1Cr5Mo 10Cr9Mo1Vb T11 T12 T22 P11 P12 P22 P91 P92 P122 etc.	G85310/6479 ASTM SA106/2 DIN17175 ASTM A213/335
输送流体用无缝钢管 Fluid conveying pipe	10 20 45 Q195 Q345 Q390 Q420 42CrMo etc.	GB/T 8163 ASTM A106 ASTM A53 EN10297 ISO 599
结构用无缝钢管 Structure tube	10 20 45 Q195 Q345 Q390 Q420 42CrMo 16Mn 27SiMn 12CrMoV etc.	GB/T 8162 ASTM A53 EN10210 JIS G 3444
气瓶用无缝钢管 Gas cylinder tube	30CrMo 35CrMo 37Mn 34Mn2V 34CrMo4 etc.	GB 18248 EN 10297 EN10083-3
船舶用碳钢管和碳 Seamless tubes for ship	320 360 410 460	GB/T 5312
液压支柱用无缝钢管 Hydraulic pillar pipe	45 30MnNb 27SiMn	GB/T 17396
石油钻杆料 Petroleum tubing	E75 X95 G105 S135	API Spec 5D

品种Variety	材质Grade(钢级Code)	标准Standard
石油裂化用无缝钢管 Cracking	20 12CrMo 15CrMo 1Cr5Mo	GB/T 9948 ISO 9329
压力用无缝钢管 (非合金和合金室温特性) Seamless steel pipe for pressure(Unalloyed and alloyed high temperature property)	P235GH(1.0345) P265GH(1.0425)	EN10216-2
压力用无缝钢管 (非合金室温特性) Seamless steel pipe for pressure(Unalloyed room-temperature property)	P195TR2(1.0108) P235TR2(1.0255) P265TR2(1.0259)	EN10216-1
低温管道用无缝钢管 Low temperature piping	16MnDG 10MnDG 09DG 09Mn2VDG	GB/T18984 ASTM A333
高压化肥管 HP fertilizer conveying pipe	20 16Mn 12CrMo 15CrMo 1Cr5Mo	GB/T 6479
低中压锅炉用无缝钢管 LP and MP boiler pipe	20	GB/T 3087
汽车半挂车轴用无缝钢管 Seamless tubes for caridan shaft	LZ20Mn2 LZ27Mn2	YB/T 4203

钢管尺寸表

Pipe dimension sheet

HOT ROLLED SEAMLESS PIPE SIZE																																
OD (in)	WT (mm)																															
38.0	2.9	3.0	3.2	3.5	3.7	3.9	4.0	4.2	4.5-7.5	5.0-6.6	6.7-7.6	7.7-8.8	8.9	9.4	9.5	9.9-9.2	9.4-9.6	9.7-10	10.5-11.4	12.0	12.7	13-14	15.2-17	18-19	19.1-20	22.0	25.0	28.0	27.0	40.0	50.0	
42.4																																
44.5																																
48-48.3																																
51.0																																
57.0																																
60-60.3																																
63.5																																
77-76																																
77.8																																
88.9-89																																
93.3																																
101.6																																
114-120																																
127-126.3																																
139-134																																
203.0																																
219.0																																
244.5-248.5																																
305-317																																
406-457																																
Standard	API 5L/ERT/ASTM/DIN/JIS/ISO										Grade										JIS A 533, B A53/542-X70/L210-L485/FSL1APSL2/NACE MR0175											
Hot Rolled seamless pipe																																

IMRISTEEL

油套管/Casing & Tubing



包钢有5条油套钢管体生产线和2条接箍生产线，年加工 $\phi 60.3-406.4\text{mm}$ 油套管40万吨。接箍生产线年加工 $\phi 63.5-406.4\text{mm}$ 套管、油管接箍100万件。包钢油套管产品已获得美国石油学会颁发的API 5CT证书，可按照API 5CT标准的要求生产各种钢级油套管，产品成功供货中石油、中石化等用户及出口印尼、泰国、埃及、委内瑞拉、俄罗斯、土耳其等国家。

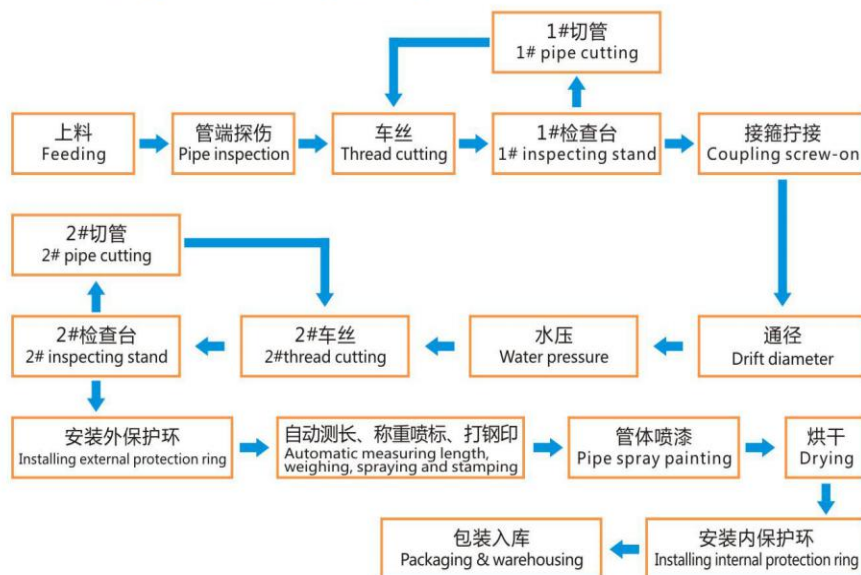


OCTG threading lines of Baotou Steel were composed by five pipe body processing lines and two coupling processing lines. The annual capacity is 400,000 tons of casing & tubing for OD $\phi 60.3-406.4\text{mm}$ and 1 million pieces of coupling for $\phi 63.5-406.4\text{mm}$.

Baotou Steel had been already awarded with API 5CT certificate and can produce different steel grades of casing and tubing according to API 5CT standard. Our products were supplied not only to the domestic like Petro China and Sinopec, but exported to Indonesia, Thailand, Egypt, Venezuela, Russia and Turkey etc.

油套管车丝工艺流程

Thread cutting process of casing & tubing



IMRISTEEL

油套管/Casing & Tubing



油套管/Casing & tubing

序号No	品种Variety	规格Size	材质Grade	标准Standard	备注Note
1	石油套管Casing	$\Phi 114.3-\phi 406.4$	J55 K55 N80 L80-1 C90 R95 P110 BT110T BT110H Q125	API 5CT API 5B	长度(Length): R1, R2, R3 扣型(Thread Type): STC, LC, BTC
2	石油油管Tubing	$\Phi 60.3-\phi 114.3$	J55 N80 L80 C90 P110	API 5CT API 5B	EUE NU

化学成分/Chemical Composition

钢级Grade	C	Mn	Mo	Cr	Ni	Cu	P	S	Si
					不大于 Not more than				
H40	—	—	—	—	—	—	0.030	0.030	—
J55	—	—	—	—	—	—	0.030	0.030	—
K55	—	—	—	—	—	—	0.030	0.030	—
N80-1	—	—	—	—	—	—	0.030	0.030	—
N80Q	—	—	—	—	—	—	0.030	0.030	—
R95	≤ 0.45	≤ 1.90	—	—	—	—	0.030	0.030	0.45
M65	—	—	—	—	—	—	0.030	0.030	—
L80-1	≤ 0.43	≤ 1.90	—	—	0.25	0.35	0.030	0.030	0.45
L80-9Cr	≤ 0.15	0.30-0.60	0.90-1.10	8.00-10.0	0.50	0.25	0.020	0.010	1.00
L80-13Cr	0.15-0.22	0.25-1.00	—	12.0-14.0	0.50	0.25	0.020	0.010	1.00
C90	≤ 0.35	≤ 1.20	0.25-0.85	≤ 1.50	0.99	—	0.020	0.010	—
T95	≤ 0.35	≤ 1.20	0.25-0.85	0.40-1.50	0.99	—	0.020	0.010	—
C110	≤ 0.35	≤ 1.20	0.25-1.00	0.40-1.50	0.99	—	0.020	0.005	—
P110	—	—	—	—	—	—	0.030	0.030	—
Q125	≤ 0.35	≤ 1.35	≤ 0.85	≤ 1.50	0.99	—	0.020	0.010	—

IMRISTEEL

钢轨&H型钢/Rail&H beam

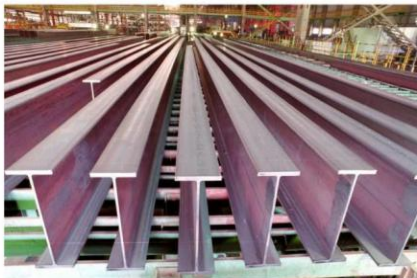


自1969年1月23日轨梁厂建成投产以来，累计生产钢轨1500多万吨。所生产的产品广泛用于铁路工程、车辆、桥梁、机械工程、基础设施建设等。包钢是中国铁道部指定供应商，全国大部分高速钢轨由包钢生产。

Total production quantity has added up to over 15 million tons since the rail and beam plant founded on January 23th, 1969. Products have been widely used for railway engineering, carriage bridge and infrastructure, etc. Baotou Steel is a designated supplier of China's Ministry of Railways. More than 50 percent of the high speed railway tracks are produced by Baotou Steel.

包钢可根据客户要求提供每米37-75公斤不同断面，时速160km/h的一般高速铁路轨道、250km/h和350km/h的高速铁路轨道。同时，还可提供各类道岔轨、吊车轨及各类型材，如乙字钢、工字钢、槽钢、H型钢、钢板桩等。

Baotou Steel can supply the rails used for general speed railway track at 160km/h, high speed railway track at 250km/h and 350km/h and profile from 37kg/m-75kg/m according to customers' requirements. At the same time, we can supply switch rail, crane rail, Z section, I beam, channel, H beam and and steel sheet pile, etc.



IMRISTEEL

钢轨&H型钢/Rail&H beam



钢轨Rail

品种VARIETIES	型号SPECIFICATIONS	材质STEEL GRADE	执行标准STANDARD
铁路用钢轨 Rail for railway	43, 50kg/m	U71Mn, U75V, U76CRre, U20Mn	TB/T2344-2012 TR/T3276-2011
	60, 75kg/m		
	UIC54/UIC60	900A	协议Agreement
	54E1/60E1	R260	EN13674-1:2011
	115RE/136RE	SS	AREMA-2014
道岔轨Switch	50AT/60AT	U71Mn, U75V, U76CRre	TB/T2635-2004
全长淬火轨 Head hardened rail	50, 60, 75kg/m	U71Mn, U75V, U76CRre	TB/T2344-2012
	UIC54/UIC60	900A	协议Agreement
	54E1/60E1	R350HT	EN13674-1:2011
起重机轨Crane rail	QU80/QU100/QU120	U71Mn QU120, QU100, QU80, QU70	YB/T5055-93, GB 2585-2007BS Series, DIN series crane rail UIC series, ASCE series, JIS Series
异形轨Channel rail	60R	U71Mn, U75V, U76CRre	协议Agreement

H型钢/H beam

规格Specifications					钢级Steel grade	标准Standard
150*150*7*10	298*149*5.5*8	388*402*15*15	450*200*9*14	606*201*12*20	SS400B S235JR S275JR Q345B	JIS G3101-2010 EN 10025-2:2004 GB/T 11263-2017
175*175*7.5*11	300*150*6.5*9	390*300*10*16	482*300*11*15	692*300*13*20		
194*150*6*9	300*305*15*15	394*398*11*18	488*300*11*18	700*300*13*24		
200*200*8*12	300*300*10*15	394*405*18*18	496*199*9*14	792*300*14*22		
200*204*12*12	340*250*9*14	396*199*7*11	500*200*10*16	800*300*14*26		
244*252*11*11	338*351*13*13	400*200*8*13	506*201*11*19	890*299*15*23		
244*175*7*11	344*348*10*16	428*407*20*35	596*199*10*15	900*300*16*28		
250*250*9*14	344*354*16*16	440*300*11*18	582*300*12*17	912*302*18*34		
250*255*14*14	346*174*6*9	400*400*13*21	588*300*12*20	970*297*16*21		
294*302*12*12	350*175*7*11	400*408*21*21	594*302*14*23	980*298*17*26		
294*200*8*12	350*350*12*19	414*405*18*28	600*200*11*17	980*298*17*31		
298*201*9*14	350*357*19*19	446*199*8*12	600*200*11*17	1000*300*19*36		

IMRISTEEL

焊管/Welded pipe



焊管是用钢板或带钢经过卷曲成型后焊接制成的钢管，常用焊接钢管按焊缝种类又可分为高频焊管（ERW）、直缝埋弧焊管（LSAW）、螺旋埋弧焊管（SSAW）。焊管具有生产工艺简单，生产效率高，成本低，品种规格多的优势。

用途：

产品广泛应用于自来水工程、石化工业、化学工业、电力工业、农业灌溉、城市建设等。

作液体输送用：给水、排水。

作气体输送用：煤气、蒸气、液化石油气。

作结构用：作打桩管、作桥梁，码头、道路、建筑结构用管等。

Welded pipe is a kind of steel pipe made of steel plate or strip. According to the types of the welding seam, the commonly used welded pipe can be divided into ERW, LSAW and SSAW. Welded pipe has the advantages of simple production process, high production efficiency, low cost and many varieties and specifications, etc.

Application: Widely used in water supply engineering, petrochemical industry, chemical industry, electric power industry, agricultural irrigation, urban construction and so on.

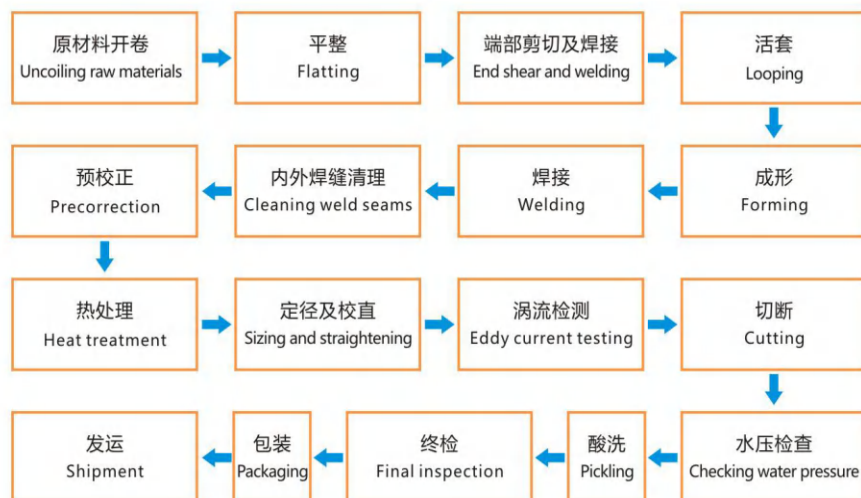
For liquid transport: water supply and drainage.

For gas transport: gas, steam, liquefied petroleum gas.

For structure use: as piling pipes and structure pipes for bridge, wharf, road, building, etc.

焊管生产工艺流程

Welding pipe production process



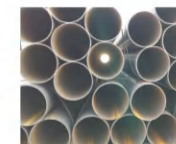
IMRISTEEL

焊管/Welded pipe

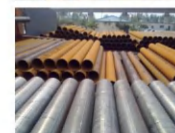


ERW是由钢带切割成窄钢条，然后用模具冷加工裹成管状。然后专用焊机接着将一条管缝焊接，外焊缝打磨光亮。

ERW is made of steel strip. First, steel strip is cut into narrow steel bar, then wrapped into the shape of tube by cold processing of mould, after that the seam is welded by a special welder, and finally the external welded seam is polished bright.



产品名称Pipe Name	直缝高频电阻焊钢管/方管ERW(Round/Square)	备注Note
产品标准Standards	GB/T3091、GB/T13793、GB/T9711、ASTMA53、API Spec 5L、DIN、JIS、EN	表面处理：镀锌/涂层/定制 长度：可以定制 Surface: galvanization/ coating/OEM Length: OEM
钢级Grade	Q190-Q345/L190-L555/A、B-X80	
外径范围O.D. Range	21.3mm - 508mm	
壁厚范围W.T. Range	0.5mm - 15.9mm	



直缝埋弧焊管是以单张中厚板为原料，将钢板在模具或成型机中中压（卷）成管坯，采用双面埋弧焊接方式并扩径而成进行生产的。其成品规格范围较宽，焊缝的韧性、塑性、均匀性和致密性较好，具有管径大、管壁厚、耐高压、耐低温抗腐蚀性等优点。

LSAW is made of single medium and thick plate. Steel plate is formed into billet in the mold or forming machine in the method of double-side submerged arc welding. The products have good toughness, plasticity, uniformity and compactness with wide range of size. It has the advantages of large diameter, thick wall, high pressure resistance, low temperature resistance and strong corrosion resistance.

产品名称Pipe Name	直缝埋弧焊管SAWL	备注Note
产品标准Standards	ASTM A252、GB/T3091、DNV-OS-F101、GB/T9711、API Spec 5L、DIN、EN、JIS	表面处理：镀锌/涂层/定制 长度：可以定制 Surface: galvanization/ coating/OEM Length: OEM
钢级Grade	Q190-Q345/L190-L555/A、B-X80/16Mn 0Cr13/1Cr17/00Cr19Ni11/1Cr18Ni9/0Cr18Ni11Nb	
外径范围O.D. Range	406.4mm - 1422mm	
壁厚范围W.T. Range	6.4mm - 44.5mm	

螺旋钢管标准名为螺旋缝双面埋弧焊钢管，是采用热轧钢带做管坯，在常温下经过螺旋方式成型，螺旋缝采用自动埋弧焊法焊接，其内外应各有一条埋弧焊缝。

SSAW is spiral seam double submerged arc welded steel pipe. Taking hot rolled steel strip as billet, SSAW is formed by spiral mode at normal temperature, and then spiral seam is welded by automatic submerged arc welding. There should be one submerged arc welding seam respectively inside and outside.



产品名称Pipe Name	螺旋埋弧焊管SSAW/SAWH	备注Note
产品标准Standards	SY/T5040、SY/T5037、GB/T9711、API Spec 5L、EN、DIN、JIS	表面处理：镀锌/涂层/定制 长度：可以定制 Surface: galvanization/ coating/OEM Length: OEM
钢级Grade	Q190-Q345/L190-L555/A/B-X80/16Mn/EN10219-10255/S235JRH-S355K2H/AS1163 1074	
外径范围O.D. Range	219.1mm - 3020mm	
壁厚范围W.T. Range	5mm - 25.4mm	

IMRISTEEL

其他产品/Other Products



防腐材料/Coating Material



胶黏剂 Adhesive



聚丙烯 PP



聚乙烯 PE



环氧粉末 Fusion Bond Epoxy Powder

3LPE/PP/FBE/DPS的主要原材料可满足 CSA Z245.20/21, DIN30670/30678, ISO21809, NFA49-711/710等技术文件的要求。

3LPE/PP/FBE/DPS main raw materials can meet the requirements of CSA Z245.20/21, DIN30670/30678, ISO21809, NFA49-711/710 etc. technical documents.

我们将根据多年的使用和生产经验,提供专业的技术指导和及时的售后服务。

We will provide professional technical guidance and timely after-sales service according to years of use and production experience.

管件防腐涂层/ Coating Fittings



High Solid Epoxy Resin Coating



PE Coating



Zinc-rich Coating

IMRISTEEL

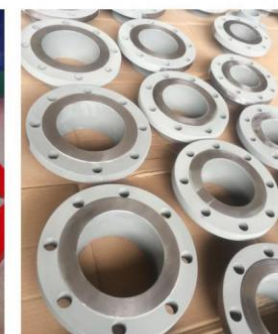
其他产品/Other Products



FBE Coating



TPEP Coating



Inorganic Zinc Coating

接箍/Coupling



接箍规格及标准/Information of Coupling

序号 No	品种 Variety	规格 Size	材质 Grade	标准 Standard	扣型 Thread Type
1	石油套管接箍 Coupling Stock for Petroleum Casing	Φ127- Φ406.4	J55 K55 N80 L80-1 C90 R95 P110 BT110T Q125	API 5CT API 5B	STC, LC, BTC
2	石油油管接箍 Coupling Stock for Petroleum Tubing	Φ63.5- Φ141.3	J55 N80 L80-1 C90 P110	API 5CT API 5B	STC, LC, BTC

为了更好的配套工程项目,我们正在开发更多的产品。

We are developing more products for better supporting engineering projects.

IMRISTEEL

质量保证/Quality Guarantee

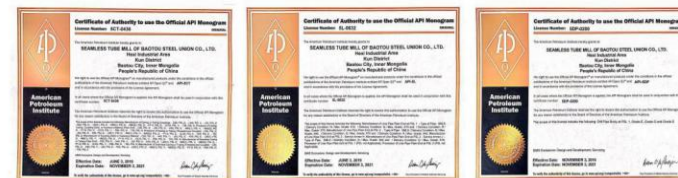
包钢根据API Q1和ISO9001建立了完善的质量体系，拥有自己的研发中心和CNAS认证的国家计量校验机构和实验室。严格按照客户要求及产品标准生产、检测，运用电磁，超声，磁粉，涡流，水压，人工检测等手段，对钢管管体，管端，接箍进行内外的横向，纵向，斜向的缺陷检查，确保向用户提供合格的高质钢管。



Baotou Steel has established a perfect quality system according to API Q1 and ISO9001. It has its own research & development center, national metrology & calibration institutions and laboratories certified by CNAS. Steel pipes are produced and inspected strictly in accordance with customers' requirements and product standards. In order to provide qualified and high quality steel pipes to clients, we perform transverse, longitudinal and oblique absence examination inside and outside on the tube body, end, and coupling by methods of electromagnetic, ultrasonic, magnetic powder, eddy current, hydraulic pressure, manual testing, etc.



钢管证书（无缝钢管/Seamless Pipe）



防腐证书（防腐涂层/Coating Product）



钢轨+H型钢（钢轨&H型钢/Rail&H Beam）



IMRISTEEL

团队/Team



我们的价值观：

满足客户的需求是我们生存的基础，
客户的需要是我们生存的理由，
寻求持续的改进是我们从事每一项工作的原动力，
有价值的员工是我们最大的财富。

Our Value：

To meet customer demand is the foundation of our survival. Customer needs are our reasons for living. To seek continuous improvement is our driving force in every project we undertake. Valuable employees are our greatest wealth.



我们的优势：

- 超过10年的行业经验
- 强大的工厂支持，有进水楼台先得月的资源优势
- 不断强大的团队，富有激情，爱学能拼
- 服务市场意识强，有多语种小组

Our advantages:

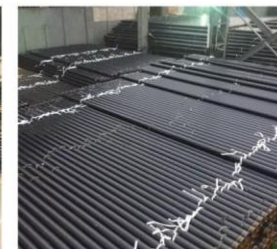
- More than ten years' experience in coating and steel pipe
- Powerful factory support, superior resources and convenient source information
- Strong team full of learning spirit, innovation, and fighting spirit
- Multilingual team, including Chinese, English, Russian and Spanish

IMRISTEEL

团队业绩/Team Projects



large SMLS Pipe for water project -650T



Lukoil project-8000T



Nigeria pipeline project-14500T



Oil reserve project of CNPC-18000T



Pipeline for Changqing oilfield-1260T



Sonatrach project-1400T



BP-Rumaila oilfield project-7660T



Changqing oilfield project-1200T coating tubing



Gas cylinder tube for Argentina-800T



Shell Pakistan project-fittings